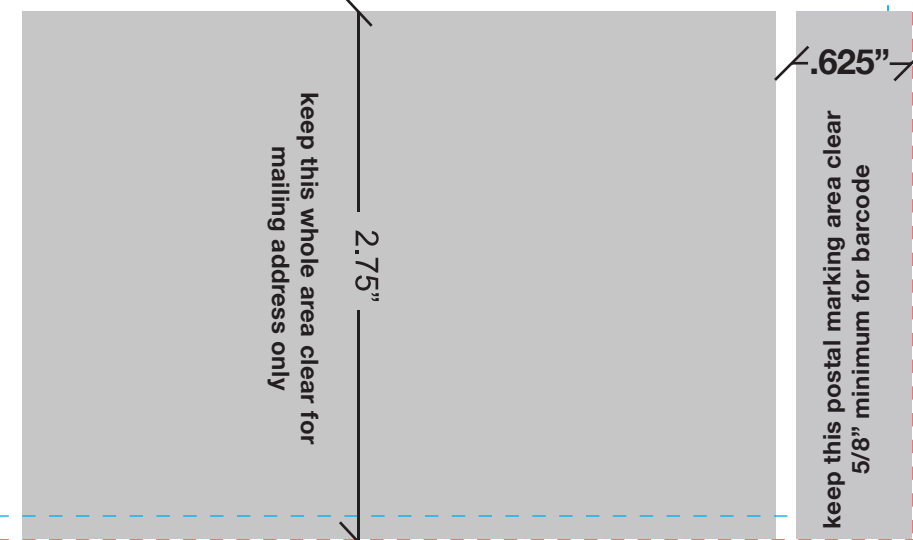


keep clear for the indicia

11" x 17" Right-Angle Half Fold
Folds to 5.5" x 8.5"

(Outside Back Cover)

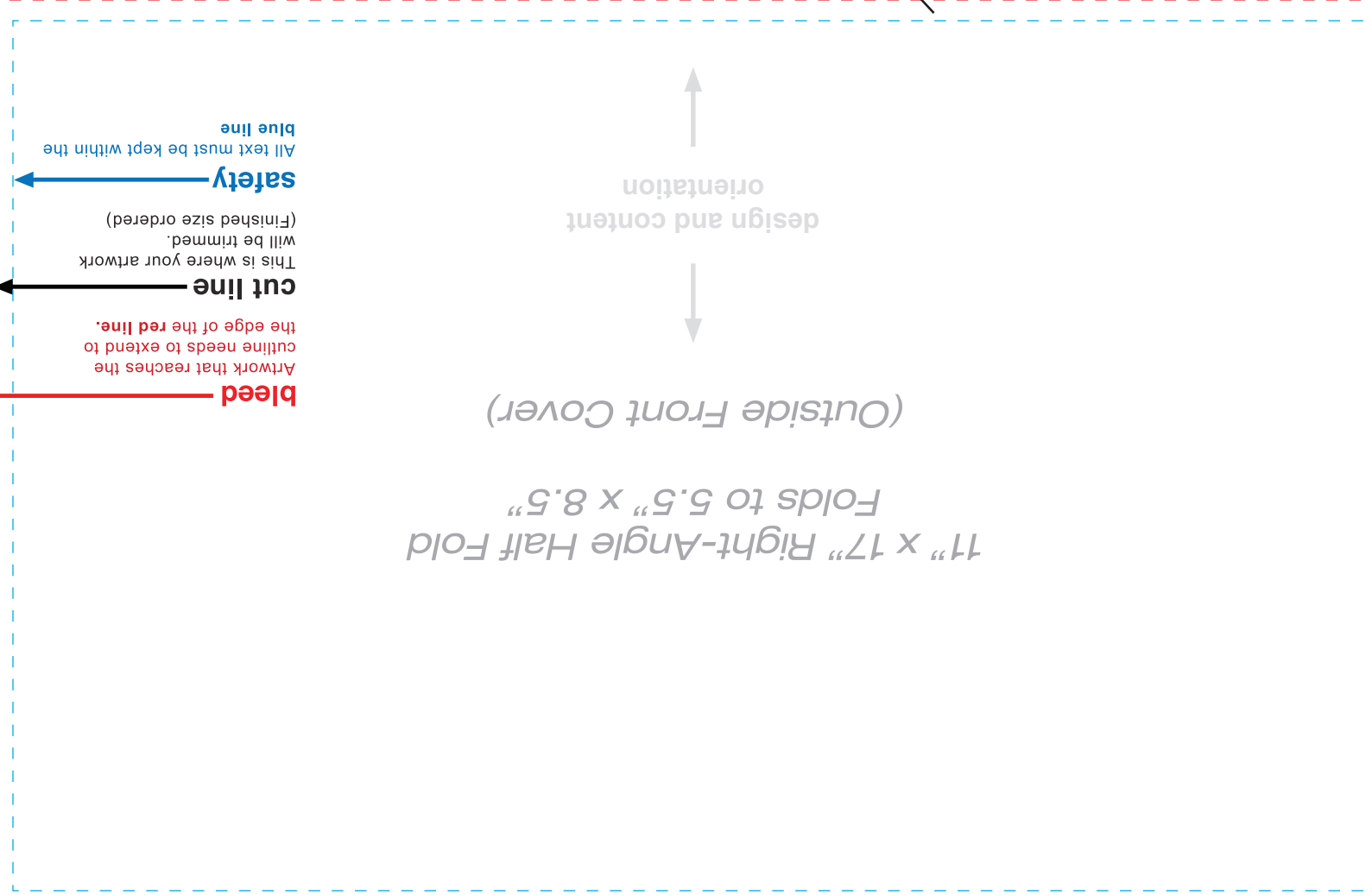
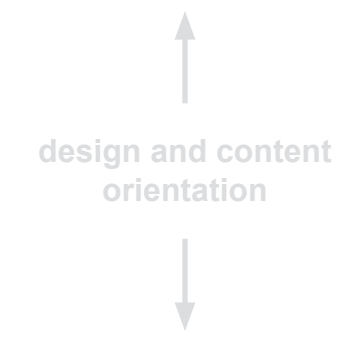


ARTWORK WITH BORDERS

Minimum border thickness must be 1/4 (0.25") thick plus the 1/8 (0.125") bleed for correct print ready artwork. Total border size from the bleed line is 3/8 (0.375"). Border example on the right.

11" x 17" Right-Angle Half Fold
Folds to 5.5" x 8.5"

(Outside Panel That Folds In - Top)



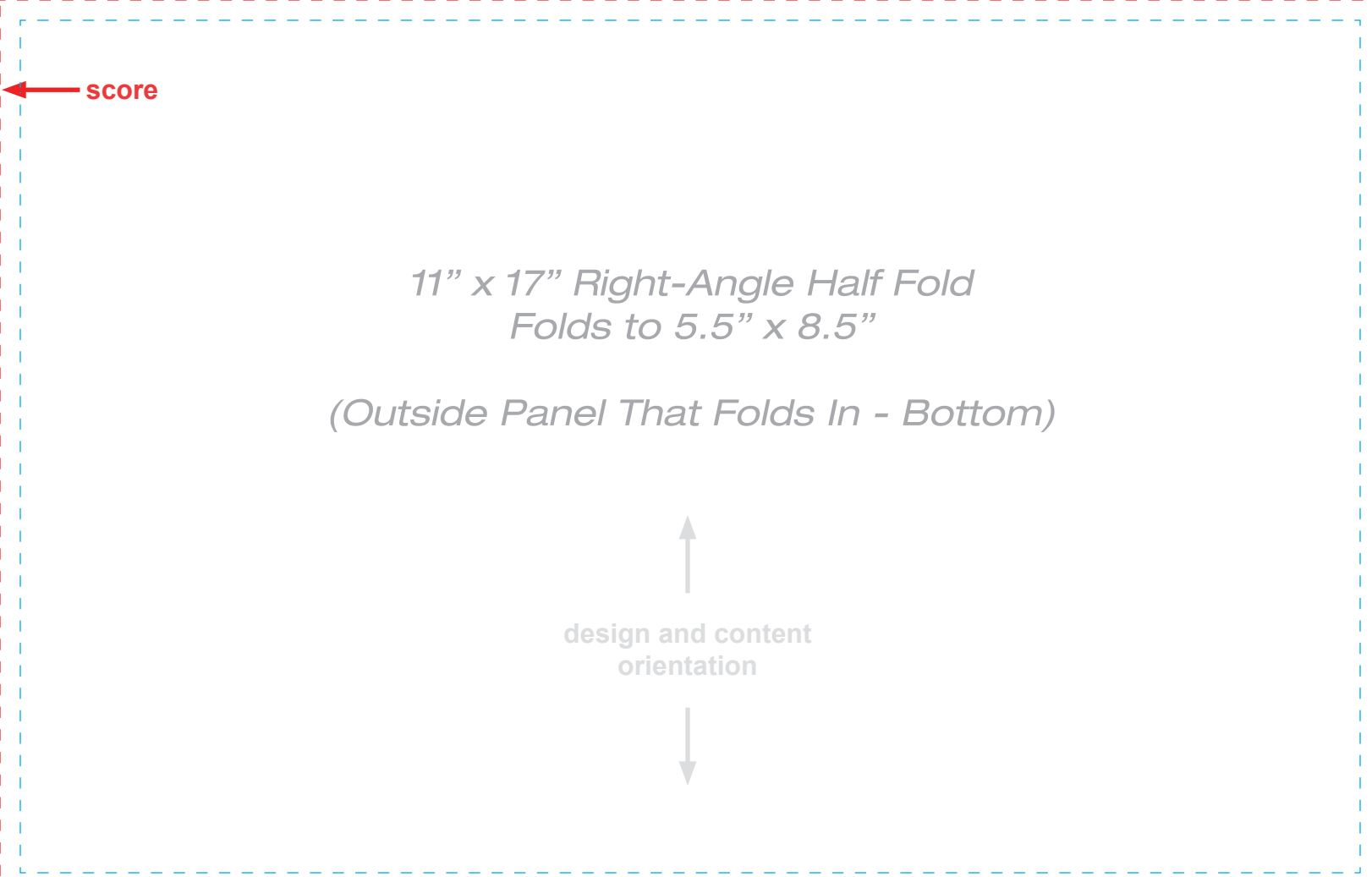
bleed
Artwork that reaches the outline needs to extend to the edge of the red line.

cut line
This is where your artwork will be trimmed. (Finished size ordered)

safety
All text must be kept within the blue line

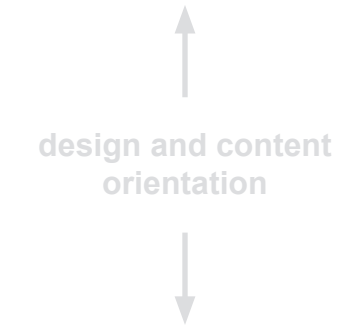
11" x 17" Right-Angle Half Fold
Folds to 5.5" x 8.5"

(Outside Front Cover)



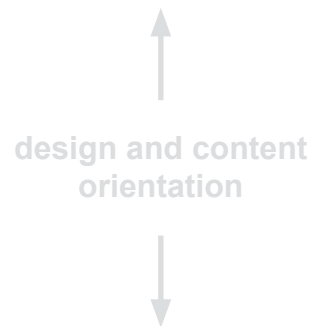
11" x 17" Right-Angle Half Fold
Folds to 5.5" x 8.5"

(Outside Panel That Folds In - Bottom)



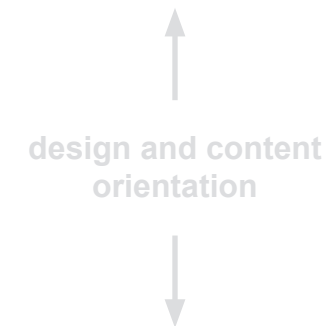
11" x 17" Right-Angle Half Fold
Folds to 5.5" x 8.5"

(Inside Top Left)



11" x 17" Right-Angle Half Fold
Folds to 5.5" x 8.5"

(Inside Top Right)



bleed → Artwork that reaches the cutline needs to extend to the edge of the red line.

cut line → This is where your artwork will be trimmed. (Finished size ordered)

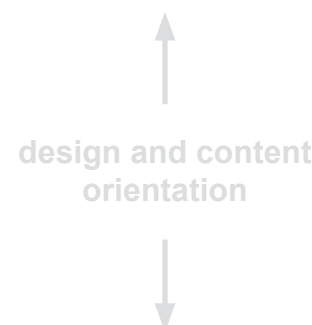
safety → All text must be kept within the blue line

ARTWORK WITH BORDERS

Minimum border thickness must be 1/4 (0.25") thick plus the 1/8 (0.125") bleed for correct print ready artwork. Total border size from the bleed line is 3/8 (0.375"). Border example on the left.

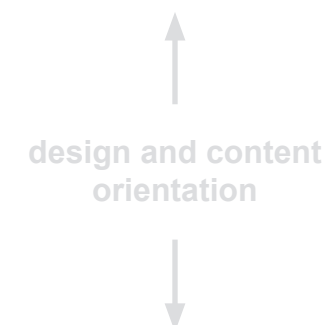
11" x 17" Right-Angle Half Fold
Folds to 5.5" x 8.5"

(Inside Bottom Left)



11" x 17" Right-Angle Half Fold
Folds to 5.5" x 8.5"

(Inside Bottom Right)



← score

↑ score

Please delete this guideline before submitting your design to print.